

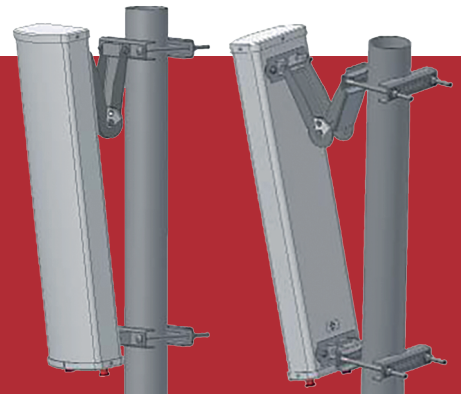
FM-SECTOR-90

Fluidmesh Sector Antenna

FEATURES

This antenna is designed to cover frequencies from 4.9 to 5.9 GHz. It offers excellent port to port isolation of 30 dB typical, with a VSWR of less than 1.5 in a rugged, off-white UV resistant radome.

- Outstanding port to port isolation of 30 dB typical
- VSWR of less than 1.5
- Great upper side lobe suppression
- Adjustable scissors-style pipe mount bracket with 0-10° downtilt



TECHNICAL DATA

Gain	16 dBi
Polarization	+/-45° linear dual slant
Nominal Impedance	50 ohms
VSWR	< 1.5
Radome Material	Gray UV resistant plastic
Termination	2 x Type N female
Mounting Method	Adjustable pipe mount bracket (included)
Frequency Range	4.9 - 5.4 GHz
Upper Side Lobe Suppression	30 degrees above horizon: > -15 dB
3dB Azimuth Beamwidth	90° +/- 10%
3dB Elevation Beamwidth	5°
F/B ratio	> 25 dB
Port Isolation	30 dB typical
Dimensions (WxDxH)	711 x 171 x 90 mm (28 x 6.7 x 3.5 in)
Weight	3.1 kg (7 lbs)
Wind Survivability	200 km/h (125mph)